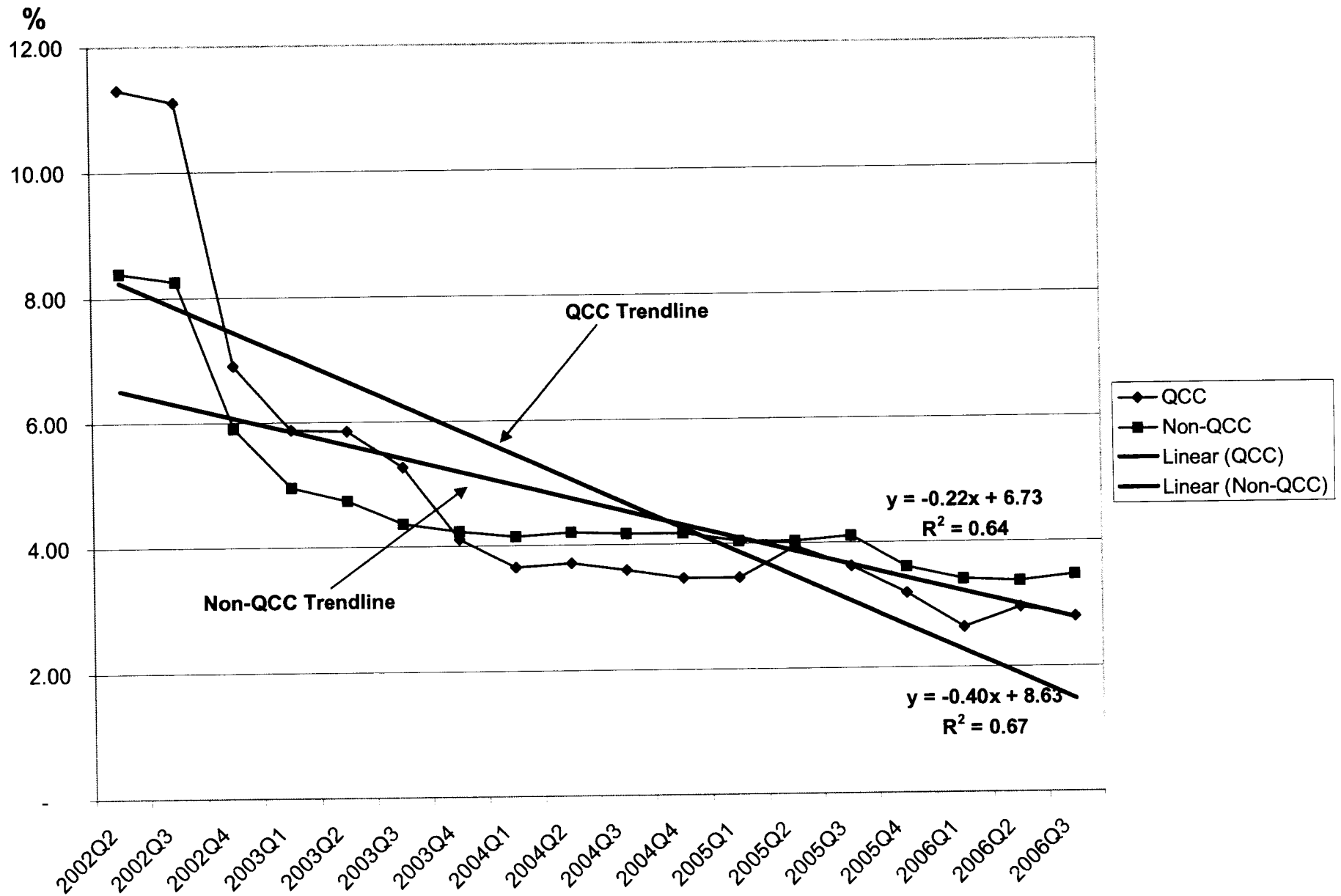


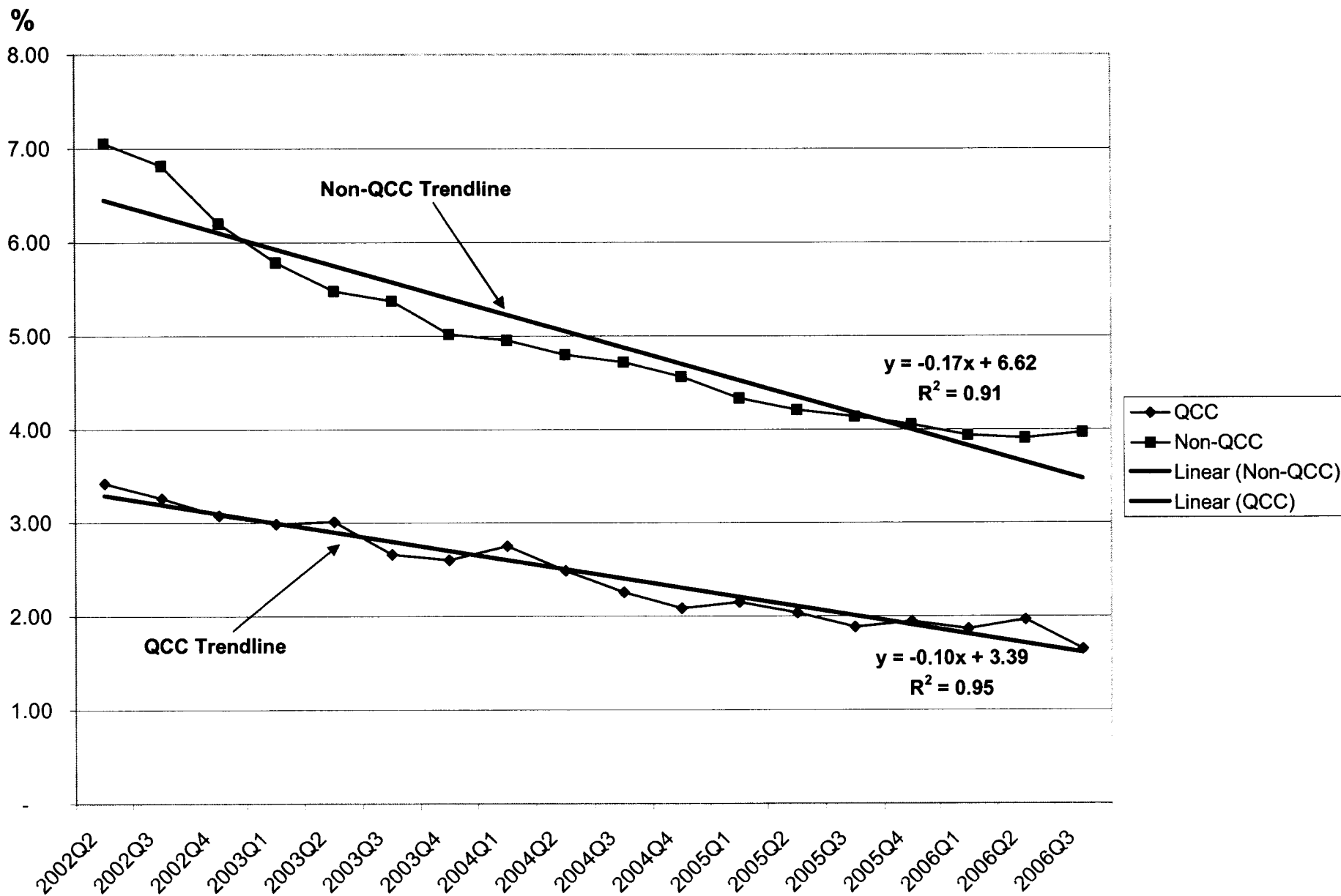
# Summary of Clinical Outcome Improvements Among QCC Facilities

2002-2006

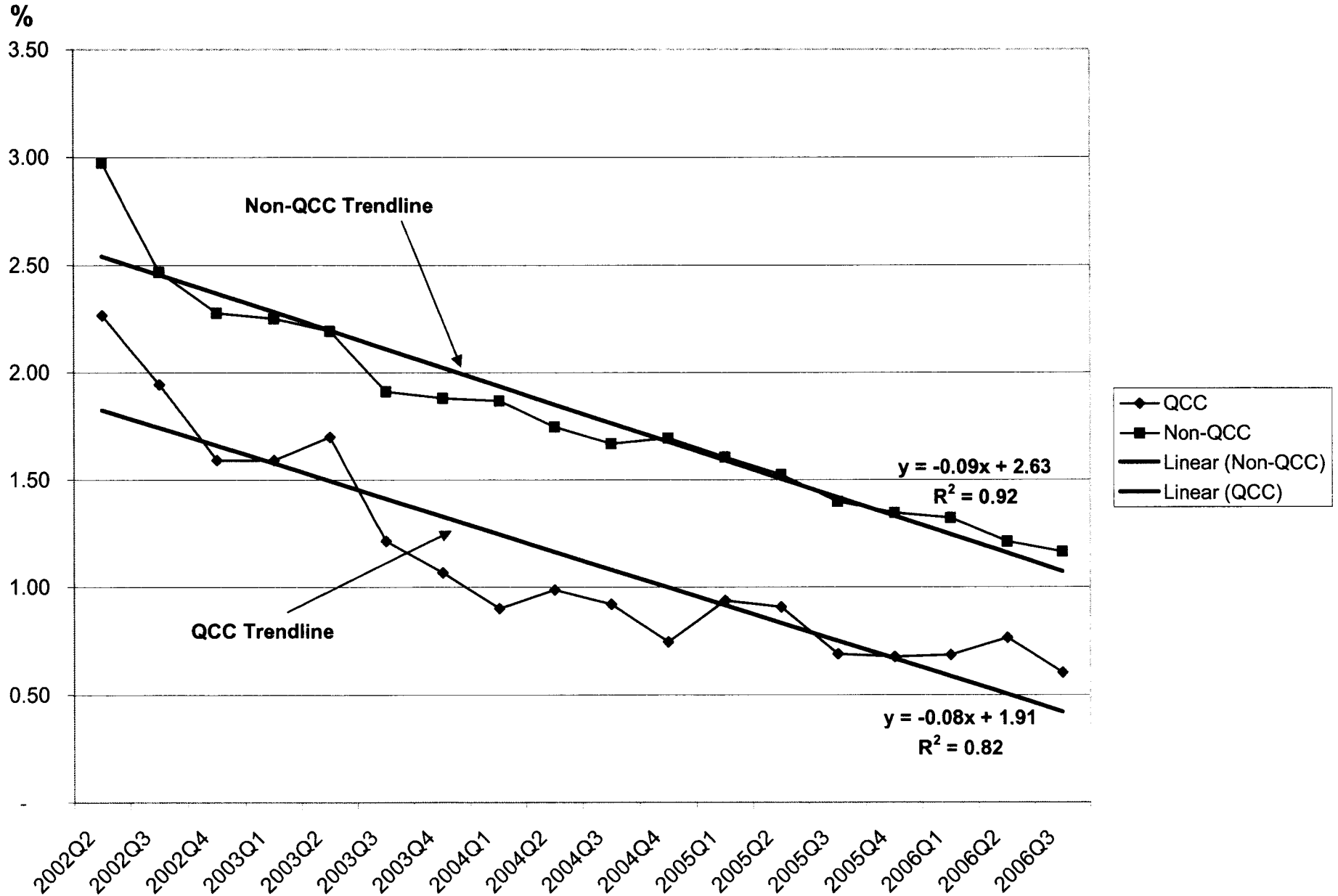
### Percentage of Residents Who Had Moderate to Severe Pain



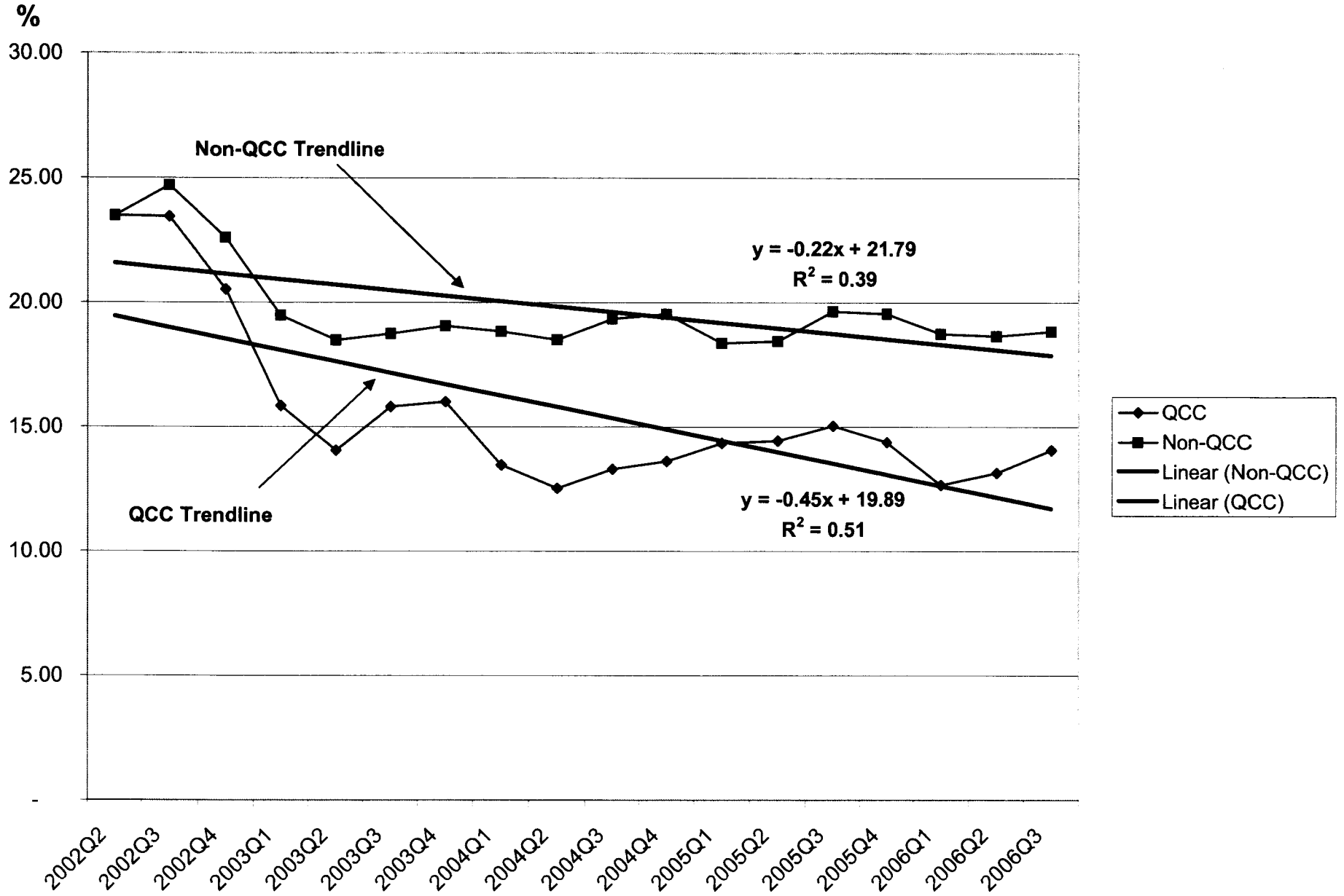
### Percentage of Residents Who Were Physically Restrained



### Percentage of Short-Stay Residents with Delirium



### Percentage of Short-Stay Residents Who Had Moderate to Severe Pain



### Percentage of Residents Whose Need for Help with Daily Activities Has Increased

